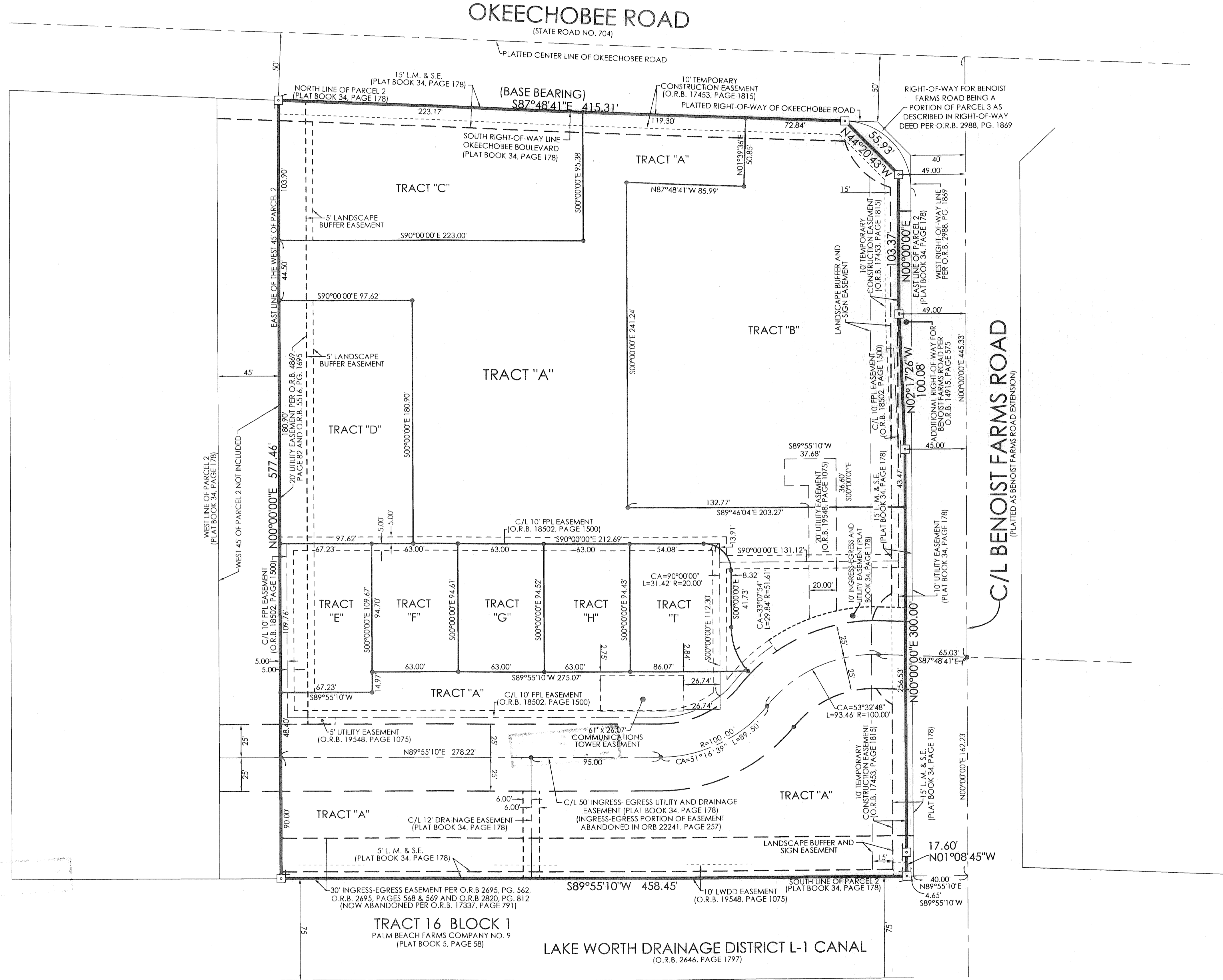
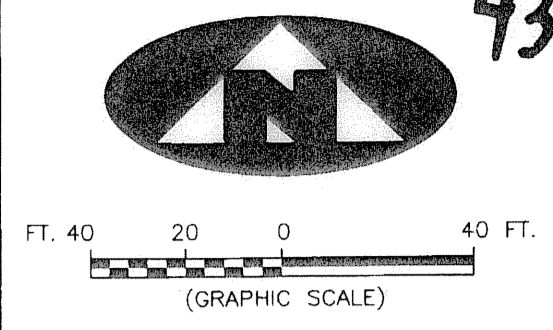


BEING A REPLAT OF A PART OF TRACT 2, GOLDEN LAKES OFFICE PARK AND GOLDEN LAKES PLAZA, RECORDED IN PLAT BOOK 34, PAGE 178, PUBLIC RECORDS, PALM BEACH COUNTY, FLORIDA AND LYING IN THE SECTION 29, TOWNSHIP 43 SOUTH, RANGE 42 EAST, CITY OF WEST PALM BEACH, PALM BEACH COUNTY, FLORIDA

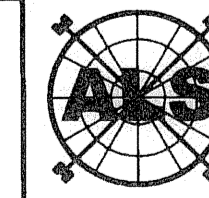


LEGEND

- (R) DENOTES A RADIAL LINE
C/L DENOTES A CENTERLINE
L.M. & S.E. DENOTES LANDSCAPE MAINTENANCE AND SIGN EASEMENT
ORB DENOTES OFFICIAL RECORDS BOOK
DENOTES A SET PERMANENT REFERENCE MONUMENT
4x4 CONCRETE MONUMENT WITH DISK (LB 7344)
R DENOTES RADIUS DISTANCE
L DENOTES ARC LENGTH DISTANCE
CA DENOTES CENTRAL ANGLE
FPL DENOTES FLORIDA POWER AND LIGHT

SURVEYOR'S NOTES

- 1. THE BEARING BASIS (BASE BEARING), AS SHOWN HEREON, IS BASED ON THE PLATTED BEARING OF SOUTH 87°48'41" EAST, ALONG THE SOUTH RIGHT-OF-WAY LINE OF OKEECHOBEE BOULEVARD, AS SHOWN IN PLAT BOOK 34, PAGE 178, PUBLIC RECORDS, PALM BEACH COUNTY, FLORIDA AND ALL OTHER BEARINGS ARE RELATIVE THERETO.
2. LINES THAT INTERSECT CURVES ARE NOT RADIAL UNLESS OTHERWISE NOTED.
3. THIS INSTRUMENT WAS PREPARED BY STEPHEN L. SHIRLEY, PROFESSIONAL SURVEYOR AND MAPPER NO. 3918, IN AND FOR THE OFFICES OF ASSOCIATED LAND SURVEYORS, INC., 4152 WEST BLUE HERON BOULEVARD, SUITE 121, RIVIERA BEACH, FLORIDA, 33404



ASSOCIATED LAND SURVEYORS, INC.
4152 W. BLUE HERON BOULEVARD-SUITE 121
RIVIERA BEACH FLORIDA 33404 LB 7344
PHONE: (561) 848-2102 FAX: (561) 844-9659 EMAIL: ALSURVEY@AOL.COM

FILE: Sedona Commons CPD

Table with 2 columns: FB, WO.NO., SCALE, DATE, DWN, SHEET. Values include 07-0070, 3-12-2008, SHEET 2 OF 2.